

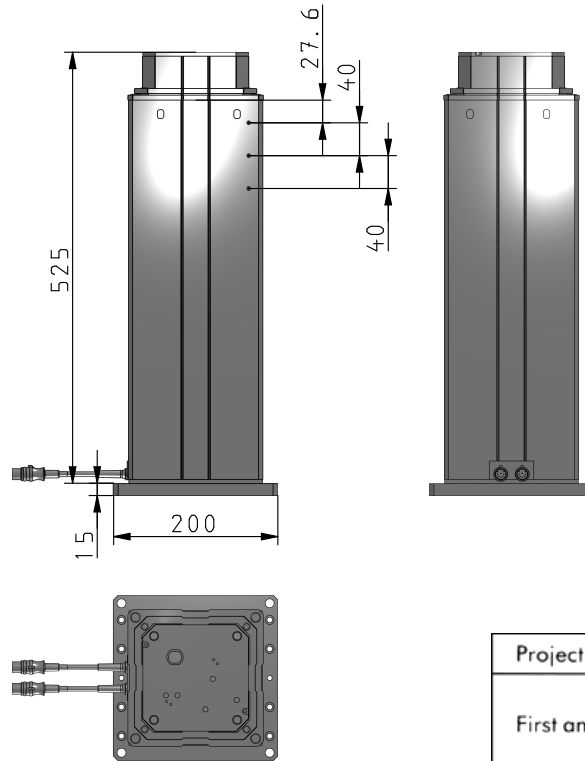
## LIFTKIT-00-500-1100-601

Linear axis for collaborative robots LIFTKIT - Telescopic Pillar LIFTKIT

Vue 3D

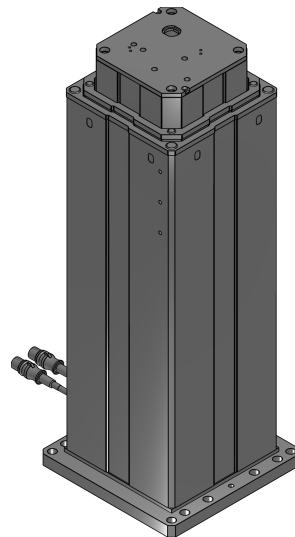
*Interactive 3D graphic, click to activate and rotate*

Vue 2D



Projection	Symbol
First angle	

Vue ISO



## Données techniques

<b>Company</b>	Ewellix
<b>Description</b>	Telescopic Pillar
<b>Part Number</b>	LIFTKIT-00-500-1100-601
<b>PRODUCT</b>	LIFTKIT
<b>ROBOT</b>	Any Robot
<b>Stroke[mm]</b>	500
<b>Electrical options</b>	120 VAC / US cable
<b>Robot Arm</b>	w/o Robot Arm
<b>CAD model position</b>	Retracted